

## Looking Forward

### New Logo

Looking ahead to the 2005 campaign, the United Way of Ellis County will have a new logo.

The official United Way logo had remained unchanged for 30 years since it was introduced in the 1970's.

With the recent national shift in mission to community impact, the United Way of America felt it was time to ask whether the visual presentation of the brand was keeping pace with the innovative, results-oriented community impact leader the organization aspires to become.

United Way of America



initiated a review of the United Way brand identity with FutureBrand, a brand consulting firm in the Interpublic Group, in June 2003.

On May 20, 2004, United Way of America publicly launched a new United Way brandmark that was endorsed by the National Professional Council (NPC) and approved by the United Way of America (UWA) Board of Trustees in December 2003.

The new brandmark strives to maximize visual impact,



optimize the visibility of the United Way name in relationship to the symbol, reinforce the United Way mission and vision, and create a greater differentiation in the not-for-profit category.

The United Way of Ellis County will officially make the switch and begin using the new logo for its 2005 campaign.

The new logo can be found on the United Way of Ellis County's website:

[www.unitedwayofelliscounty.org](http://www.unitedwayofelliscounty.org)

## 2004 Board of Directors

Sandra Bainter  
USD #489

Dennis Brumbaugh  
2004-05 Campaign Chair  
EnerSys Inc.

Christie Brungardt  
Fort Hays State University

Lonny Claycamp  
Insurance Planning

Deron O'Connor  
Commerce Bank

Kurt David  
Nex-Tech

Tomi Dechant  
Hays High School

Craig Dewell  
Kansas Highway Patrol

Brian DeWitt  
Adams, Brown, Beran and Ball

Mark Hauptman  
USD # 489

Mary Jeter  
Hays Medical Center

Katie Joy  
Hays High School

Dawn Malott  
Wal-Mart

Donna Maskus  
Deputy Ellis County Clerk

Dia Montgomery  
Community Volunteer

Pat Parke  
Board President  
Midwest Energy, Inc.

Rebecca Sander  
Fort Hays State University

Jerry Sprock  
First Baptist Church

BoB Templeton  
Community Volunteer

Lisa Unrein  
Sunflower Bank

Bruce Whittington  
Hays Medical Center



# United Way of Ellis County 2004 Annual Report

### Inside:

Profit & Loss Statement

Key Club and  
Gold Award Winners

Agencies & Grants help  
meet Community Needs

Outstanding Companies  
and New Fundraisers



Published by:  
The United Way of Ellis County

Executive Director: Sue Rouse  
Communications Director:  
Megan Smith

718 Main, Suite 206  
Hays, KS 67601  
Phone: (785) 628-8281  
Fax: (785) 628-8287  
e-mail: [unitedway@media-net.net](mailto:unitedway@media-net.net)  
[www.unitedwayofelliscounty.org](http://www.unitedwayofelliscounty.org)

## Solutions Matching Your Community Needs!

## Donate Online Today!

at

[www.unitedwayofelliscounty.org](http://www.unitedwayofelliscounty.org)

United eWay accepts credit card donations  
through Visa, Mastercard,  
American Express, and Discover.

The merchant account and gateway services are provided  
through the combination of CyberSource and  
Bank of America.



*Solutions Matching Your  
Community Needs!*



### United Way of Ellis County Memorial/Honorary Tribute Fund



Please accept this memorial/honorary tribute gift of \$ \_\_\_\_\_

\_\_\_\_\_ In memory of \_\_\_\_\_ Anniversary \_\_\_\_\_ Happy Birthday

\_\_\_\_\_ Get Well \_\_\_\_\_ Other (please specify)

Person(s) Honored: \_\_\_\_\_

Send Acknowledgment to:

Address: \_\_\_\_\_ City \_\_\_\_\_ State \_\_\_\_\_ Zip \_\_\_\_\_

Make checks payable to the United Way of Ellis County, and return this card to  
PO Box 367, Hays, KS 67601. If you have questions please call the office at 628-8281.



# Campaign Report

## Message from the Campaign Chair

The 51st United Way of Ellis County's campaign ended in December with record contributions of \$352,228. As we continue to grow the community's ability to respond to the human service needs and have a lot for which to be thankful.

In particular, I would like to thank two groups in making this a very successful campaign. The first group to be recognized is the individuals and companies who contributed to the campaign. Some of the more notable local support included the outstanding campaign at Hays Medical Center; continued support by Fort Hays State University and Midwest Energy.

The campaign also benefited with new and innovative campaign support with businesses such as Beond Salon, Golden Corral and Auto World. The second group to be recognized is the Division Chairpersons and their volunteers who donated their time to make it all happen.

The businesses I mentioned supporting the campaign are all made up of

people.

These are the people who care enough to support the human service needs of the community by committing themselves to making life better for others. The people who make a difference are not just the ones with the credentials, but also the ones with the concerns.

We are also fortunate by seeing a new level of economic growth in our community with new businesses such as NEW and Home Depot locating in Hays. NEW's tenure here is measured in months yet they are already a supporter of United Way of Ellis County. Home Depot has a reputation of supporting communities. The same type of caring employees we currently see in the community will staff these businesses. Yes, we had a great campaign due to community involvement and have even better opportunities ahead.

Sincerely,  
Dennis Brumbaugh  
2004-05 Campaign Chair



## From the President of the Board of Directors

Dear Friends and Members,

One year ago, we were invigorated by our 50<sup>th</sup> anniversary celebration. That enthusiasm clearly touched our community, our member agencies, and most importantly, our donors.

This is one time when it seems appropriate to repeat what we told you last year. The United Way of Ellis County has completed another record campaign securing over \$352,000 in pledges and gifts. Campaign Chair Dennis Brumbaugh, his committee and the United Way staff deserve our sincere admiration for conducting an effective campaign. This record commitment by our donors came at the same time the community opened its heart and purse for the benefit of Jarett Basgall. For all the bad news in today's

world, we have much to celebrate right here at home.

The success of our annual campaign can divert attention from the year-round work of the United Way of Ellis County. In addition to funding our 16 member agencies, we continue to provide community response grants to both member and non-member agencies. These grants are for both one-time and start-up efforts.

We also continue to evaluate ourselves for continuous improvement. The Board of Directors reviewed and amended our Bylaws to bring them up to date and approved a new strategic plan. The United



Way of Ellis County also sponsored policy governance training for its Board and representatives of our member agencies. Volunteer organizations thrive when they have well-trained and focused board members.

As my final official act as 2004 Board President, I extend my gratitude to every donor. Without your gift, large or small, there would be no value in this organization. The United Way of Ellis County is only a tool in your hands. Your compassion is what ultimately shapes the community response to human service needs.

Sincerely,  
Patrick Parke  
2004 Board President

## 2004 Volunteers

Sandra Bainter	Katie Joy	Pat Parke
Dennis Brumbaugh	Pam Joy	Judy Parks
Lonny Claycamp	Steve Keil	Thomas Prince
Kurt David	Richard Kraemer	Becky Sander
Craig Dewell	Marty LaBarge	Henry Schwaller IV
Brian DeWitt	Corey Leiker	Ernee Sly
Brian Dreiling	Tom Lippert	Ronan Sramek
Todd Gabel	Donna Maskus	Dan Stecklein
Doug Greer	Sue May	BoB Templeton
Mark Hauptman	Tom Meis	Lisa Unrein
Mary Jeter	Dia Montgomery	Ramie Wasinger
Carol Joy	Deron O'Connor	Deanna Wellbrock
		Tricia White

# Thank You



# Campaign Highlights

## New Fund-raising Events



### bēond the runway

On Saturday, March 6, 2004 Beond Salon helped raise about \$3,400 for the United Way with Beond the Runway, a hair and fashion show. Over 100 models showed off clothing and accessories from twelve area businesses on the runway in a New York style fashion show. The fun continued after the show with an After Party featuring music from Complete Music, Hors d'Ouevres and giveaways.



### Auto World Fundraiser

Conducting an innovative campaign, local automobile dealership Auto World helped raise \$3,710 for the United Way. The dealership generously donated a portion of the sales from every car sold between September 1 - November 15 to the United Way.

### Golden Corral Benefit Breakfast

Golden Corral and the Fort Hays State University football team helped to kick-off the FHSU Homecoming weekend with a benefit breakfast for the United Way on October 8. FHSU football players waited tables, helping to raise over \$3,000 for the United Way, with \$550 from tips. 423 people rolled out of bed to eat breakfast, including about 110 FHSU students.



### Holiday Inn Family Day

Kids had the opportunity to meet Shrek at the Holiday Inn's Family Day on November 5. Families enjoyed a meal in the Stadium Club while watching the movie Shrek on the big screens. Shrek was also on hand for pictures. The Stadium Club donated a portion of its proceeds from the night to the United Way and also raised money by having Shrek pose for pictures.

### N.E.W. Campaign

The N.E.W. completed its first United Way campaign after opening its doors only a few months ago. N.E.W. conducted small fundraisers amongst its employees to help raise money for the United Way.

## Outstanding Companies

### Gold Award Winners

The United Way of Ellis County recognizes the following companies and departments as Gold Award Winners. These organizations conducted an employee campaign with a minimum contribution of \$500 with either 100 employee participation or an average gift of \$25 per employee.

- |   |  |
|---|--|
| <p><b>Major Employers</b><br/>         APAC- Kansas, Inc.<br/>         Bank of America<br/>         Central Plains Laboratories<br/>         City of Hays<br/>         Airport<br/>         City Clerk's Office<br/>         City Manager's Office<br/>         Convention and Visitors Bureau<br/>         Fire and Inspection<br/>         Police Department<br/>         Commerce Bank<br/>         Eagle Communications, Inc.<br/>         Ellis County<br/>         Attorney<br/>         Treasury<br/>         Ellis State Bank<br/>         Emprise Bank<br/>         EnerSys, Inc.<br/>         Federal Express<br/>         First National Bank<br/>         Fort Hays State University<br/>         President's Office<br/>         Provost's Office<br/>         Registrar's Office<br/>         Virtual College/CTELT<br/>         Accounting and Information Systems Department<br/>         Art Department<br/>         Biological Sciences<br/>         Department<br/>         Chemistry Department<br/>         Communication Disorders<br/>         Department<br/>         Communication Studies<br/>         Department<br/>         Educational Administration<br/>         and Counseling Department<br/>         Geosciences Department<br/>         History Department<br/>         Health &amp; Human Performance<br/>         Department<br/>         Leadership Studies Department<br/>         Mathematics &amp; Computer<br/>         Science Department<br/>         Nursing Department<br/>         Political Science and Justice<br/>         Studies Department<br/>         Sociology and Social Work<br/>         Department</p> | <p><i>Special Education Department<br/>         Computing and<br/>         Telecommunications Center<br/>         Docking Institute of Public<br/>         Affairs<br/>         Forsyth Library<br/>         Memorial Union<br/>         Student Health Center</i><br/>         Golden Belt Bank<br/>         Hays Daily News<br/>         Heartland Building Center<br/>         Hays Medical Center<br/>         High Plains Mental Health<br/>         Holy Family Elementary School<br/>         Insurance Planning, Inc.<br/>         JC Penney Company, Inc.<br/>         McDonalds of Hays<br/>         Midwest Energy, Inc.<br/>         Nex-Tech<br/>         SBC<br/>         Stecklein and Brungardt PA<br/>         Sunflower Bank<br/>         Thomas More Prep-Marian High<br/>         School<br/>         USD #489<br/>         Hays Area Children's Center<br/>         Felten Middle School<br/>         Lincoln Elementary School<br/>         O'Loughlin Elementary School<br/>         Wilson Elementary School</p> |
|---|--|

### Hays Medical Center

Dr. John Jeter, President and CEO of Hays Medical Center presents Pat Parke, United Way of Ellis County board president with a check for \$40,000 on Dec. 14. The check helped the United Way exceed its campaign goal of \$345,000. Hays Medical Center had the largest combined employee and corporate giving.



### EnerSys Inc.

The fourth Annual Mud Volleyball Tournament, helped to raise about \$1,600 for the United Way this year. EnerSys also increased its giving by about 8 percent this year with its internal campaign. In addition to monetary donations, EnerSys also graciously allowed its plant manager, Dennis Brumbaugh, to serve as the 2004 campaign chair.

**Fort Hays State University** exceeded its 2004 campaign goal and raised a little over \$32,000 for the United Way. With the largest employee campaign, 93 percent of the University employees turned in pledge cards and 53 percent made a contribution. Sixty-one units on campus had 100 percent participation. Dr. Hammond will entertain all of the members with 100 percent participation in Victor E. Lounge during basketball games.

**Midwest Energy** is this year's largest corporate contributor to the campaign. Every year, Midwest Energy matches employee contributions dollar for dollar. This match shows a corporate commitment to caring for the community.

### Top 10 Donors in 2004

- The top 10 donors in 2004 are listed below in alphabetical order.
1. City of Hays
  2. Eagle Communications Inc.
  3. EnerSys Inc.
  4. Fort Hays State University
  5. Hays Medical Center
  6. Midwest Energy, Inc.
  7. Nex-Tech
  8. Sunflower Electric Power Corp.
  9. Unified School District #489
  10. Wal-Mart

## Key Club

The Key Club recognizes those individuals and couples who make a significant contribution to the United Way. Their leadership is vital to the growth of the United Way and its capacity to meet the demand for services in our community. Key Club giving totaled \$ 92,214.24.

### Gold Key (\$2,500-\$4,999)

Ernie and Lara Lehman  
 Dick and Kay Werth

### Silver Key (\$1,000-\$2,499)

Don and Cecilia Bickel  
 Lisa and Kent Colwell  
 Cindy Elliott  
 Mike and Judy Engel  
 Robena Farrell  
 Jim and Jo Hanks  
 Susan Harper  
 Jim and Linda Hohman  
 Helen Kraemer  
 Rick and Gail Kuehl  
 Tom and Janette Meis  
 Patrick and Chardell Parke  
 Galen and Cathy Pfeifer  
 Paul and Patricia Phillips  
 Jim and Deborah Pipes  
 Jeff and Tina Wick  
 1 anonymous

### Bronze Key (\$500-\$999)

Patty Baconrind  
 Sandra Bainter  
 Rex and Debbie Ball  
 Daryl and Corina Beam  
 Ken and Barbara Beran  
 Larry and Cheryl Berg  
 David and Sandra Berry  
 Tim and Susan Bickel  
 D.G. and Millie Bickel  
 Dennis and Betty Brumbaugh  
 Stephen and Judy Brummer  
 Roy and Karen Brungardt  
 Curt and Christie Brungardt  
 Sid and Arlene Carlile  
 Earl Carlson  
 Dale and Sherry Chaffin  
 John and Jayne Clarke  
 Lonny and Becky Claycamp  
 Bob and Sheryl Cox  
 Kurt and Kathy David  
 Kay Davis  
 Craig and Kris Dewell  
 Thomas J. and Patricia Drees  
 Sharon Dreher  
 Larry Dreiling  
 Errol Engel  
 Pat Engelhardt  
 Amy Filley  
 Ron and Amy Finch  
 Bob and Karol Goodin  
 Dale Gottschalk  
 Larry and Eva Gould  
 Mike and Robbie Graf  
 Doug and Becky Greer  
 Carol and Doug Haberman  
 Ed Hammond  
 Mike and Carla Hattan  
 Dave and Sonya Herl  
 Laura and John Herl  
 Walt Hill  
 Danny and Sandy Jacobs  
 John and Mary Jeter  
 Brandon Johnson  
 Brad and Jana Jordan  
 Mr. and Mrs. Karlaskindt  
 Mark and Kathy Kaseforth  
 Bob Keener  
 Randy and Terry Kilian  
 Mike and Laurie Konz  
 Rich and Marti Kraemer  
 Luanne Kramer  
 Jeffrey Lowe  
 Bob and Bev Lowen  
 Leona Madden  
 Mark and Patty McCullick  
 Kim and Todd Meier  
 Jill Merritt  
 Mike and Jeanie Michaelis  
 Wilmer and Dora Lee Michel  
 Mike and Debbie Miles  
 Tim Miller  
 John and Dia Montgomery  
 Dan Nixon  
 Stori Norton  
 Carolyn Nye  
 Deron and Sue O'Connor  
 Rick and Joan Ostmeyer  
 Bill and Karen Overbey  
 Rook and Faye Park  
 Dan and Judy Parks  
 Steve and Julie Paul  
 Verlin and Elaine Pfannenstiel  
 Bob and Gloria Rader  
 Dennis Radford  
 Rick Rajewski  
 Brian and Sarah Razak  
 Dallas and Sharon Richards  
 Glenn and Barbara Rockers  
 Jean Ross  
 Chuck and Sue Rouse  
 Valery Rule  
 Andy and Kathy Rupp  
 Michael and Laura Sadeghi  
 David Schmidt

Bob and Pat Schmidt  
 Thomas and Debra Schumacher  
 Doug and Jill Shaw  
 Gary and Mary Ann Shorman  
 John and Shelbi Solida  
 Dan and Gayle Stecklein  
 BoB and Ruth Templeton  
 Brad and Lisa Unrein  
 Terry and Mary Kay Urban  
 Michael and Kathleen Volker  
 Carroll and Janet Waggoner  
 Earl and Karen Watkins  
 Bob and Nancy Wertenberger  
 Tim and Sandee Werth  
 Bruce and Stephanie Whittington  
 Norman Williams  
 Wayne and Gera Lou Woofter  
 Brett and Julie Zollinger  
 8 anonymous

## 2004 Profit and Loss Statement (unaudited)

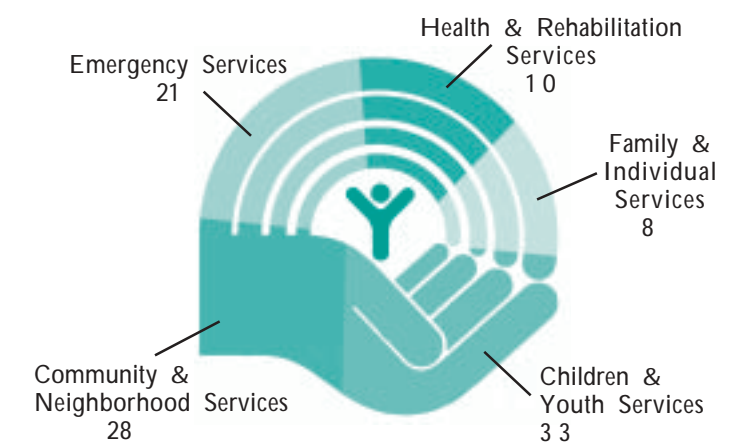
<b>Income</b>	
Pledge Income.....	\$317,329.75
Interest Income.....	\$1,835.40
In Kind.....	\$4,800-
<b>Total Income.....</b>	<b>\$323,965.15</b>
<b>Expenses</b>	
Administration.....	\$69,622.51
Program.....	\$216,045.00
Fund-raising.....	\$9,255.99
Depreciation.....	\$2,583.25
<b>Total Expenses.....</b>	<b>\$297,506.75</b>
<b>Net Income.....</b>	<b>\$26,458.40</b>
Community Response Fund Grant.....	\$22,219.50
(Paid from previous year's income)	
	<b>\$4,238.90</b>

## 2005 Agency Allocations

First Call for Help.....	\$36,000
Cancer Council of Ellis County.....	\$15,000
Northwest Kansas Family Shelter.....	\$8,000
Big Brothers Big Sisters of Ellis County.....	\$22,000
Kansas Legal Services.....	\$7,000
Ellis County Ministerial Alliance.....	\$15,000
Hays Area Children's Center.....	\$27,000
Western Kansas Association on Concerns of the Disabled..	\$18,000
United Cerebral Palsy of Kansas.....	\$6,500
Developmental Services of Northwest Kansas.....	\$12,000
Court Appointed Special Advocates of the High Plains.....	\$13,000
Catholic Charities.....	\$4,000
Girl Scouts of the Sunflower Council.....	\$7,000
Ellis County Chapter of the American Red Cross.....	\$22,000
Parents and Children Together.....	\$2,500
Coronado Area Council of Boys Scouts of America.....	\$4,000
<b>Subtotal.....</b>	<b>\$219,000</b>

### A Special Thank You to our Non-Cash Contributors

- Beond Salon
- Commerce Bank
- Commercial Builders
- Eagle Communications, Inc.
- EnerSys Inc.
- Evelyn Toft
- First United Methodist Church
- Golden Belt Bank
- Golden Corral
- Holiday Inn
- Nex-Tech
- Northwestern Printers
- The Bakery Shop
- The Hays Daily News
- Youth Advisory Council
- Wal-Mart



Allocations by United Way of Ellis County by service area for fiscal year 2005.

## Hays Area Children's Center



You would never be able to guess just by looking at him that 16 month old Kayleb Darst suffers from epilepsy and asthma.

At the tender age of two months old, Kayleb had his first seizure and stopped breathing. His parents remember how scared they were; unaware of what was going on.

About one month later, a MRI indicated that Kayleb has epilepsy.

Thankfully, with help from Hays Area Children's Center (HACC), the family does not have to deal with Kayleb's medical conditions alone.

"This would be a hard thing for anyone to go through (son's medical

conditions), but the key to getting through it is to surround yourself with competent people who really care about your needs and that's what the Hays Area Children's Center does," Nathan Darst, Kayleb's father said.

At a routine check-up, Kayleb's doctor had a concern about the muscle tone in Kayleb's legs and referred him to the HACC for physical therapy services.

The family now receives Family Services Coordination, Nursing, Occupational Therapy, Early Childhood Special Instruction and Speech-Language services from the Hays Area Children's Center.

## Kansas Legal Services

Kansas Legal Services recently moved its office to 2017 Vine St. in Hays.

Kansas Legal Services assists low-income persons, elderly persons, and abused individuals in various legal matters. They also assist dislocated farmers in attaining employment.

Earlier this year, Kansas Legal Services was able to assist Lori with her legal matters.

"One day I received a phone call from my ex informing me that he had gotten a lawyer," Lori said.

"I had no idea what I was going to do. I had two

children to feed and bills to pay, I couldn't afford a lawyer," Lori said.

Kansas Legal Services stepped in and agreed to take one Lori's case and not only provided her with a

voice but with a support system as well.

"Kansas Legal Services was there for me during a time in my life when I had no one else

to turn to. They helped me settle all of my legal matters and helped me get my life moving into a positive direction," Lori said.



## 16 Member Agencies

- First Call for Help
- Western Kansas Association on Concerns of the Disabled (WKACD)
- Developmental Services of Northwest Kansas (DSNWK)
- Girl Scouts of the Sunflower Council
- American Red Cross, Ellis County Chapter
- Coronado Area Council Boy Scouts of America
- Cancer Council of Ellis County
- Northwest Kansas Family Shelter
- Court Appointed Special Advocates (CASA) of the High Plains
- Kansas Legal Services
- Hays Area Children's Center
- United Cerebral Palsy of Kansas
- Parents and Children Together (PACT)
- Ellis County Ministerial Alliance
- Catholic Charities
- Big Brothers Big Sisters of Ellis County

## Girl Scouts of the Sunflower Council

By merely observing others at school, kids begin to understand how social issues affect children in the community.

As eleven and twelve year olds, the four girls in the Girl Scout Troop 27 see the impact struggling financially can have on a community through the eyes of some of their classmates.

"I think there are a lot of kids whose parents don't have as good of jobs, so they can't buy the extras," Rachal, Junior Girl Scout said.

As Junior Girl Scouts in the Girl Scouts of Sunflower Council, the girls have the opportunity to earn the Bronze Award, the highest

award a Junior Girl Scout can receive.

To receive the Bronze Award, the girls had to complete a community service project.

They decided to make get well bags for kids in the hospital and blankets for newborns whose parents struggle financially.

The girls well-surpassed the goal they set of making 35 get-well bags and 12 blankets.

What started out as an idea for a project to earn the

Bronze Award turned into a valuable life experience.

"The most important thing the girls have learned from their Girl Scout



project is that even at their age, they can make a difference in someone's life, Paulla, Scout Troop 27 leader said.

## Community Response Fund Grants

As part of its commitment to returning dollars to local agencies, the United Way of Ellis County awards Community Response Fund Grants to local agencies every year. Since 1998, the United Way of Ellis County has been able to address emerging and changing needs within the community by awarded approximately \$186,000 in Community Response Fund Grants to local agencies. These grants are made available to local agencies because of the generosity of the community and its strong support of the United Way.

## Hays Area Children's Center

The United Way of Ellis County awarded the Hays Area Children's Center a \$3,719.50 to upgrade its playground to meet licensing specifications for the Kansas Department of Health and Environment standards.

The grant was used to purchase additional wood chips and rubberized safety mats for the playground.

All toddlers who attend the HACC have the opportunity to play on the

playground.

The HACC is the largest child care center and one of two National Association for the Education of the Young Child approved sites in western Kansas.

The HACC also provides children from birth to 3 years of age with an identified disability with specialized programming in speech, language, motor, social development, self-care and thinking skills.



## Center for Civic Leadership

Helping to support and promote volunteerism, the United Way of Ellis County awarded the Center for Civic Leadership \$500 to pay for the cost of lunch at its second annual Service Learning Fair.

The fair was held on Sept. 9 in the Fort Hays State University Memorial Union. It gave FHSU students and faculty the opportunity to meet with local agencies and develop ideas for service learning projects.



Service-Learning gives FHSU students the opportunity to get involved outside of the classroom. It enhances learning and growth while also benefiting the community.

The service learning projects are closely related to the academic goals of the class, providing students with hands-on learning and the ability to reflect on their work.

FHSU students have completed numerous service learning projects that benefit the community.

## Youth Advisory Council

The United Way awarded the Youth Advisory Council with a \$4,000 grant.

The grant will allow the Youth Advisory Council to supplement an individual to manage the activities of the group and will cover the cost of communication with council members.

The Youth Advisory Council is comprised of Hays middle and high school aged youth. The organization gives these youth a voice in the community, provides leadership and fosters volunteerism.

## Habitat for Humanity

In an effort to assist Habitat for Humanity raise the \$50,000 needed to build the first Habitat house in Ellis County, the United Way awarded the organization with a \$10,000 Community Response Fund Grant.

Habitat for Humanity's mission is to build safe, decent, affordable houses in partnership with those in need of adequate shelter.

The local organization received its affiliation in June of 2003 and immediately began fundraising.

The average cost to build a



Habitat House in the United States is \$46,000.

Volunteers and the Habitat families supply nearly all of the construction labor.

To be approved for a Habitat home, a family must meet income guidelines, have an acceptable debt-to-income ratio and

demonstrate ability to make regular monthly payments. The family can not have declared bankruptcy within a year of the application review and must have no liens or judgments that cannot be cleared prior to closing.

## American Red Cross

Due to an increase in services and a decrease in donations, the Ellis County Chapter of the American Red Cross found itself in danger of having to close its doors in April of 2003.

A \$4,000 response fund grant from United Way allowed the organization to keep its doors open.

According to Red Cross executive director, Tricia White, it was a slow time of year, donations were down, and there were some

fundraisers in the works but just not enough money to stretch until the end of the month.

After receiving the funds, the Red Cross organized a couple of successful fundraisers, renegotiated their rent and utility contract, and have taken other actions to lower their expenses.

According to White, the steps the organization has taken has put them in a more financially secure position.